


Norca III

Instructions

$2\frac{1}{4}'' \times 3\frac{1}{4}''$ and
 $2\frac{1}{4}'' \times 2\frac{1}{4}''$



This manual is for reference and historical purposes, all rights reserved.

This page is copyright© by M. Butkus, NJ.

This page may not be sold or distributed without the expressed permission of the producer

I have no connection with any camera company

On-line camera manual library

This is the full text and images from the manual. This may take 3 full minutes for the PDF file to download.

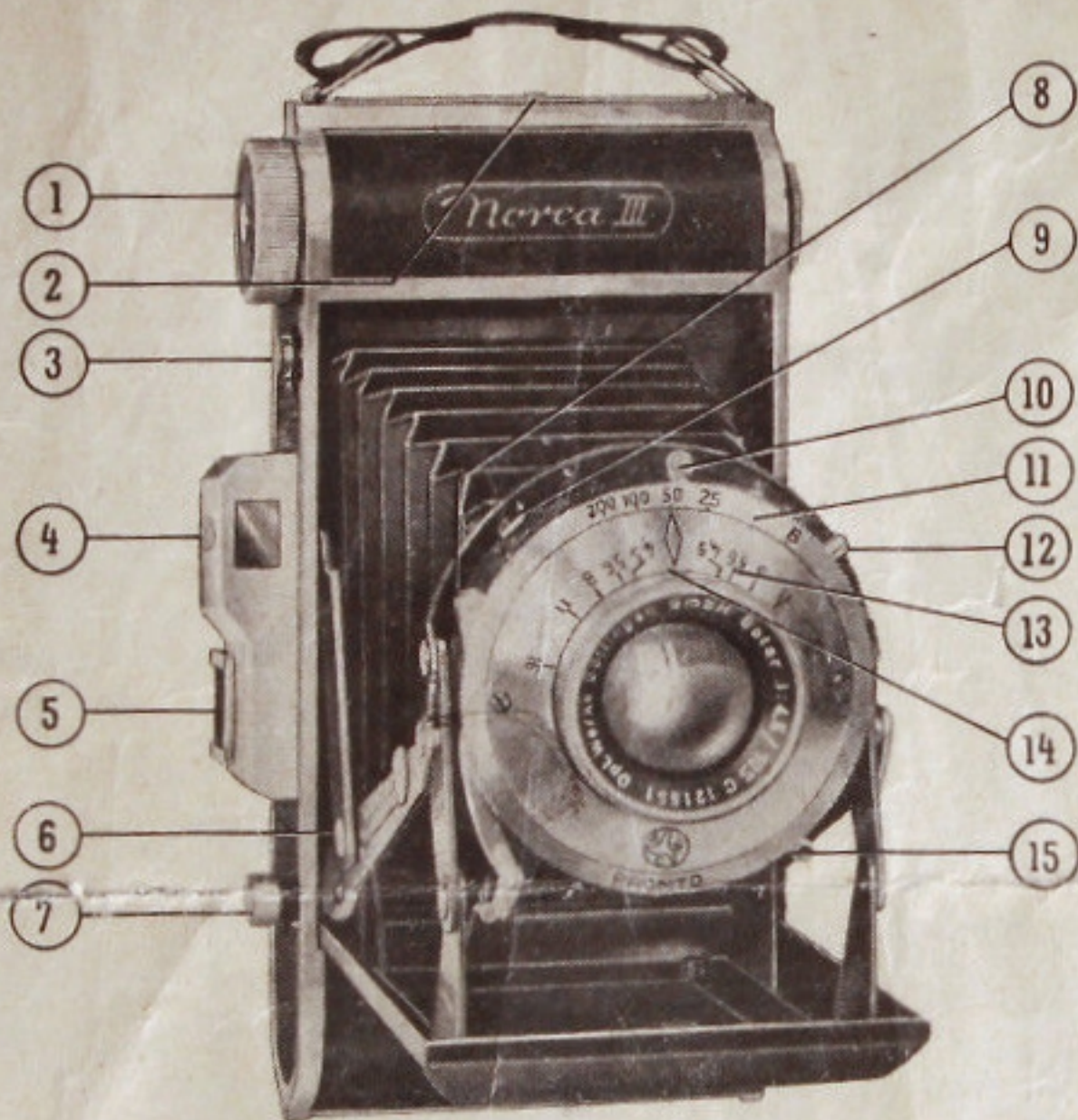
If you find this manual useful, how about a donation of \$3 to: M. Butkus, 29 Lake Ave., High Bridge, NJ 08829-1701 and send your e-mail address so I can thank you. Most other places would charge you \$7.50 for a electronic copy or \$18.00 for a hard to read Xerox copy.

This will allow me to continue to buy new manuals and pay their shipping costs.

It'll make you feel better, won't it?

**If you use Pay Pal or wish to use your credit card,
click on the secure site on my main page.**

PayPal Name Lynn@butkus.org



Key To Part Numbers.

- | | |
|---|--|
| 1 Film winding knob | 8 Socket for cable release |
| 2 Catch for camera back | 9 Lens aperture settings |
| 3 Button for opening camera | 10 Shutter cocking lever |
| 4 Optical view finder with mask for $2\frac{1}{4}'' \times 2\frac{1}{4}''$ format | 11 Shutter speed setting |
| 5 Range finder shoe | 12 Flash plug socket |
| 6 Bellows Strut | 13 Depth of field ring |
| 7 Shutter release button | 14 Lens focussing |
| | 15 Delayed action device for self-portraiture. |

How To Insert The Film.

To open the back of the camera catch (2) should be moved in the direction of the arrow. A No. 20 (120) film ($2\frac{1}{4}'' \times 3\frac{1}{4}''$) is then inserted in the empty film chamber and the tapered end of the backing paper is drawn out far enough to enable it to be inserted in the slot of the take up spool. Wind on a few turns, being certain that the paper is firmly engaged in the take up spool and is wound on smoothly. Close the camera and then continue winding until Fig. 1 appears in the red window.

How To Take Pictures.

Press button (3) and the folding front of the camera will spring forward into position. The struts on either side of the bellows should be locked straight with an audible click. Once the lens aperture (9), the focussing (14) and shutter (11) have been correctly set an exposure can be made. Be certain that the camera is held steadily and is not jerked when pressing the shutter release button (7). Camera "shake" is the commonest cause of disappointing results. For most slow exposures and always when using shutter setting B, a tripod and cable release should be used. **Warning.** The delayed action device must not be used when the shutter is set at B.

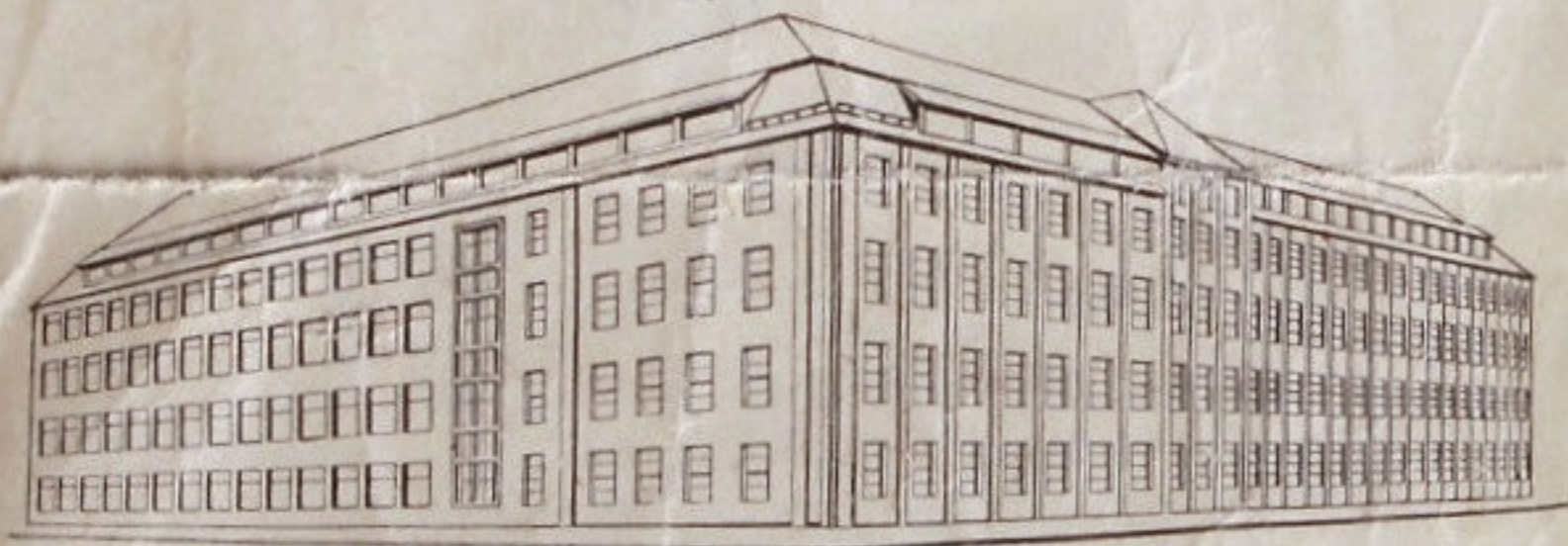
How To Set The Camera For $2\frac{1}{4}'' \times 2\frac{1}{4}''$ Pictures Instead Of $2\frac{1}{4}'' \times 3\frac{1}{4}''$.

It will be seen that there are swinging panels housed in the film chambers. These should be swung into the track of the film reducing the aperture leading to the bellows from an oblong of $2\frac{1}{4}'' \times 3\frac{1}{4}''$ to a square of $2\frac{1}{4}'' \times 2\frac{1}{4}''$. The button on the top of the optical view finder should then be pushed forward so that the field covered by that view finder is also reduced from

an oblong to a square. When winding on the film for $2\frac{1}{4}'' \times 2\frac{1}{4}''$ pictures the red window which has the appropriate size indication should be used. If it is desired to revert to $2\frac{1}{4}'' \times 3\frac{1}{4}''$ pictures all these various settings should be reversed.

How To Close The Camera.

Holding the camera body with two hands press the side struts (6) one with each thumb and fold up the drop front so that the lens is retracted into the camera body.



**CARL BRAUN KG - KAMERAWERK
NURNBERG**